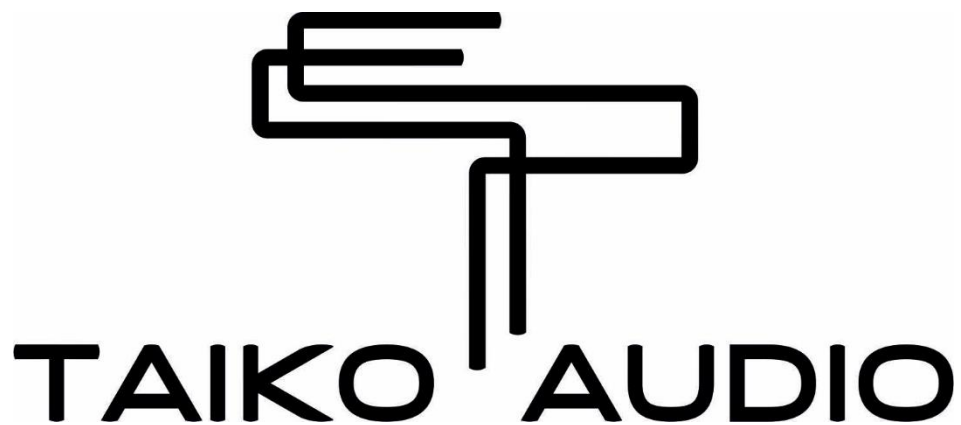


Manual for Upgrading Storage Extreme

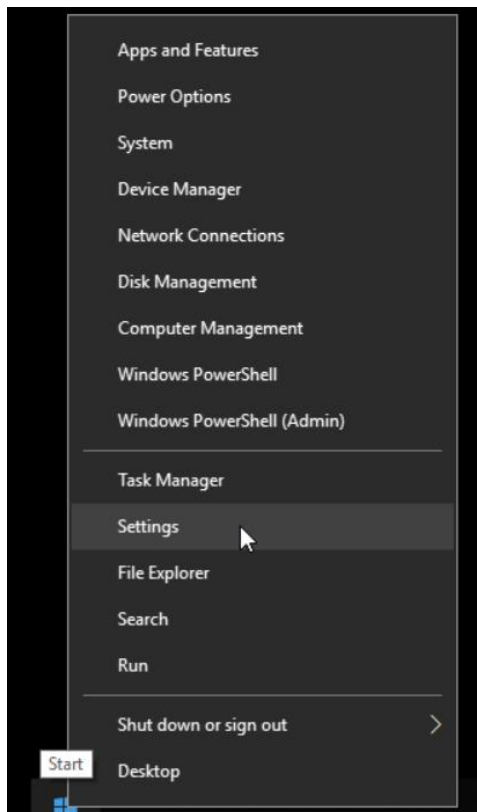


WARNING: Following this manual is on your own risk !

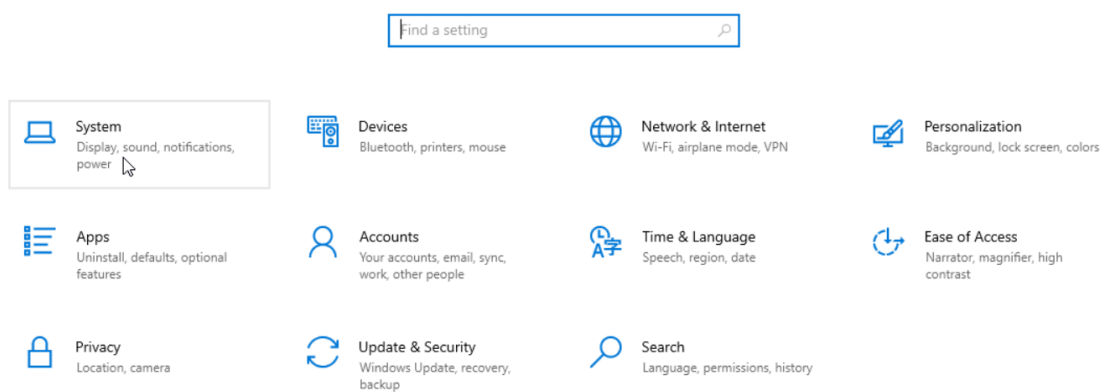
Make sure you have a good backup of your music files, before starting !

If you have no experience with this you schedule an support session.

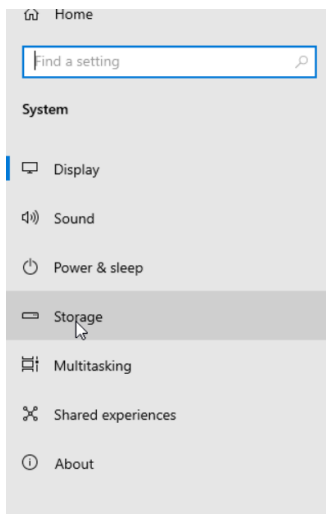
Open settings by right clicking the Start button -> settings



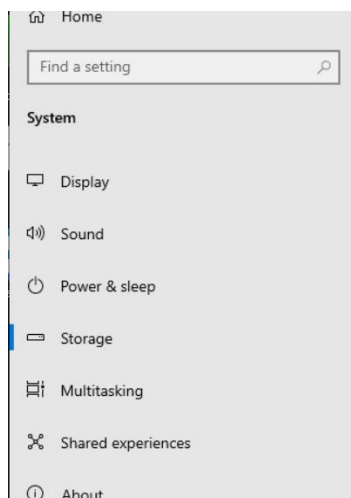
Following screen appears



Click on **System**.



Click on **Storage**



Storage

Local storage

An administrator has disabled the Storage Service on this system.

Storage sense

[Change how we free up space automatically](#)

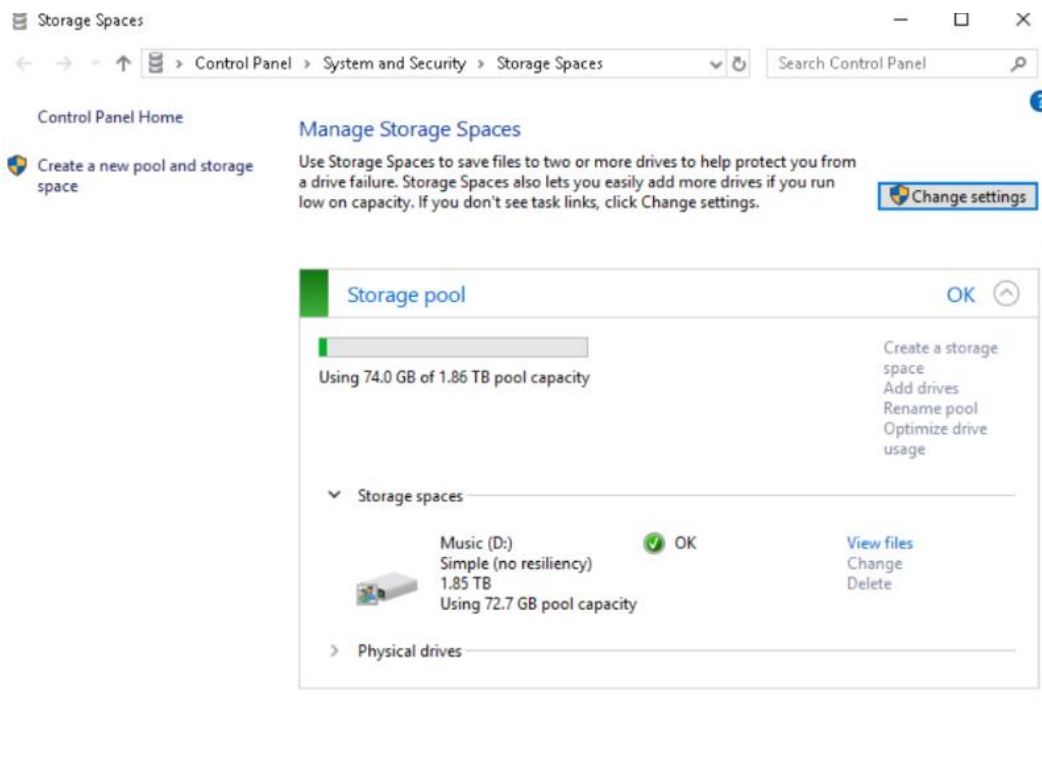
[Free up space now](#)

More storage settings

[Change where new content is saved](#)

[Manage Storage Spaces](#)

Click on **Manage Storage Spaces**







There is a bug here...Add drives is not clickable

Click on **Create a new pool and storage space**

Select drives to create a storage pool

Unformatted drives

<input checked="" type="checkbox"/>		Samsung SSD 970 EVO Pl... Attached via NVMe 1.81 TB	Disk 2
<input checked="" type="checkbox"/>		Samsung SSD 970 EVO Pl... Attached via NVMe 1.81 TB	Disk 3
<input checked="" type="checkbox"/>		Samsung SSD 970 EVO Pl... Attached via NVMe 1.81 TB	Disk 4
<input checked="" type="checkbox"/>		Samsung SSD 970 EVO Pl... Attached via NVMe 1.81 TB	Disk 5

Create pool Cancel

Click on Cancel

Storage Spaces

Control Panel Home

Create a new pool and storage space

Manage Storage Spaces

Use Storage Spaces to save files to two or more drives to help protect you from a drive failure. Storage Spaces also lets you easily add more drives if you run low on capacity. If you don't see task links, click Change settings.


Change settings

Storage pool

Using 74.0 GB of 1.86 TB pool capacity

Create a storage space
Add drives
Rename pool
Optimize drive usage

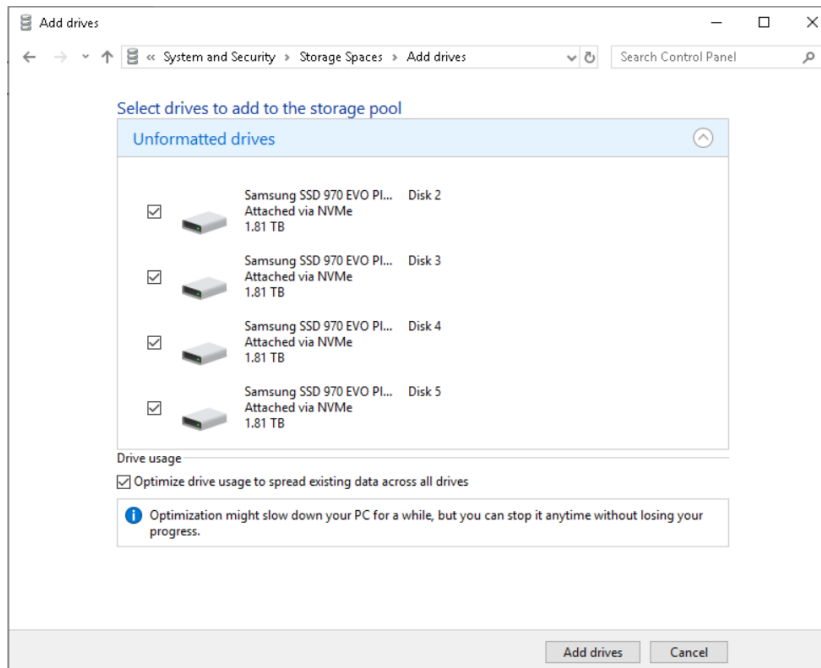
Storage spaces

	Music (D:) Simple (no resiliency) 1.85 TB Using 72.7 GB pool capacity	OK	View files Change Delete
---	--	----	--------------------------------

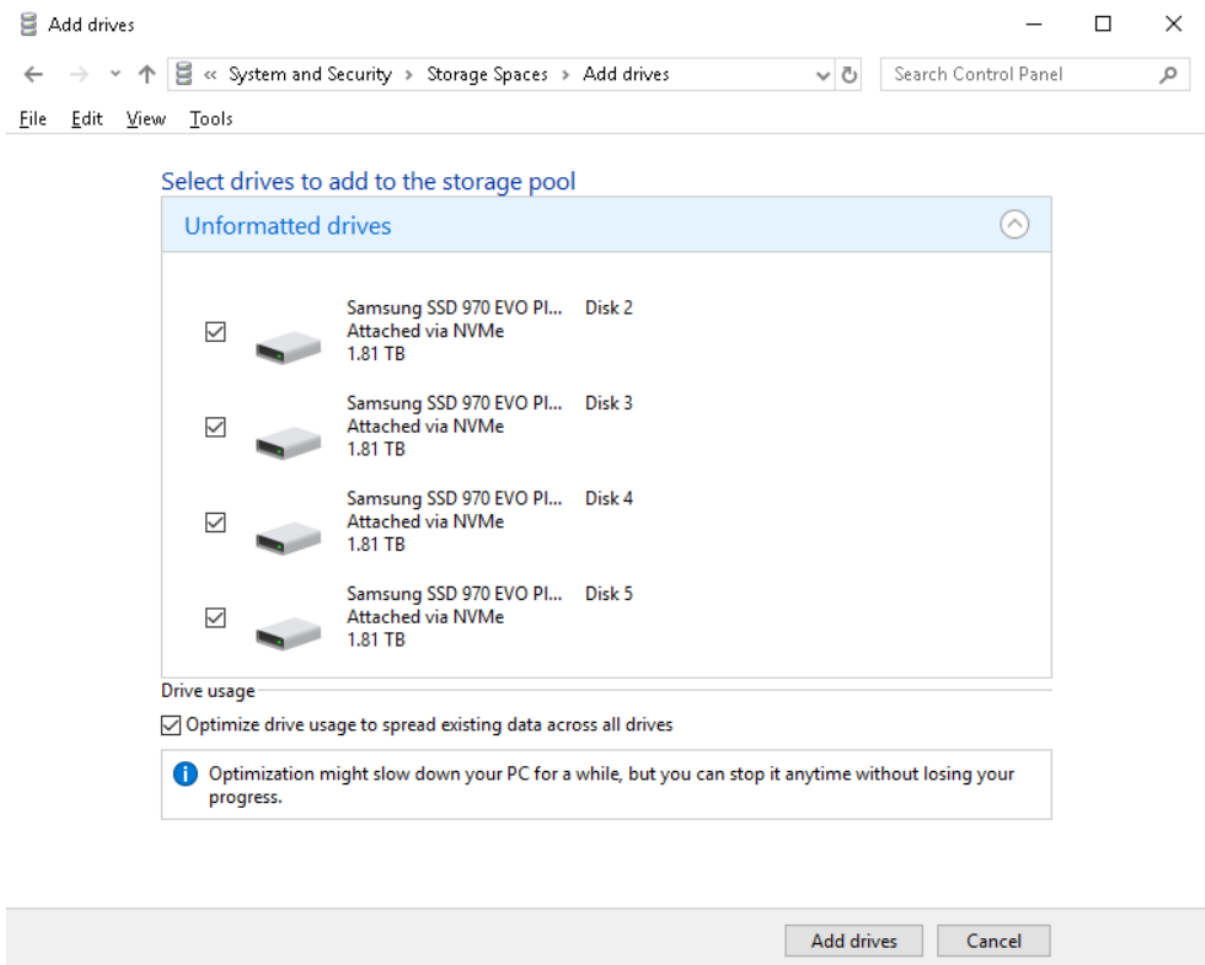
Physical drives

Click on **Add Drives**

Following screen appears



Here you see the Unformatted Drives, click on **Add drives**



And you are all set.