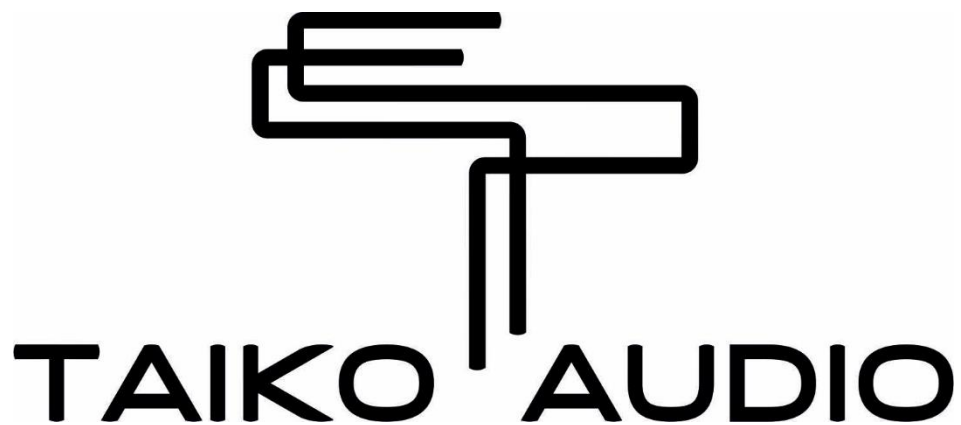


Manual for Upgrading Storage Extreme

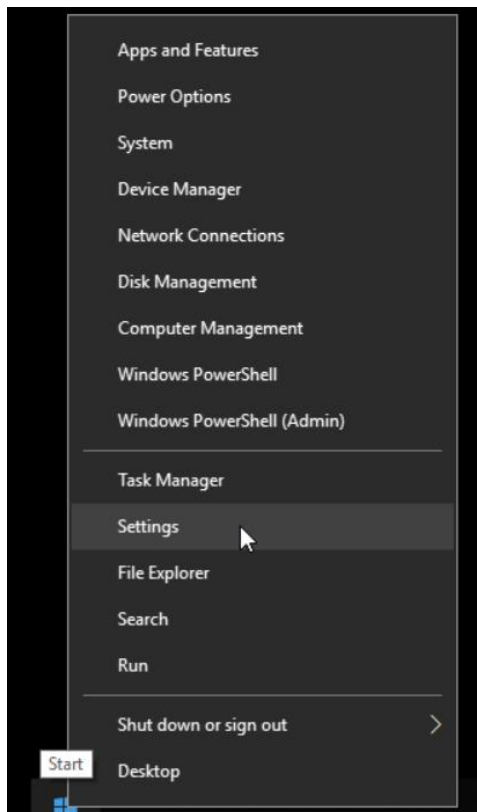


WARNING: Following this manual is on your own risk!

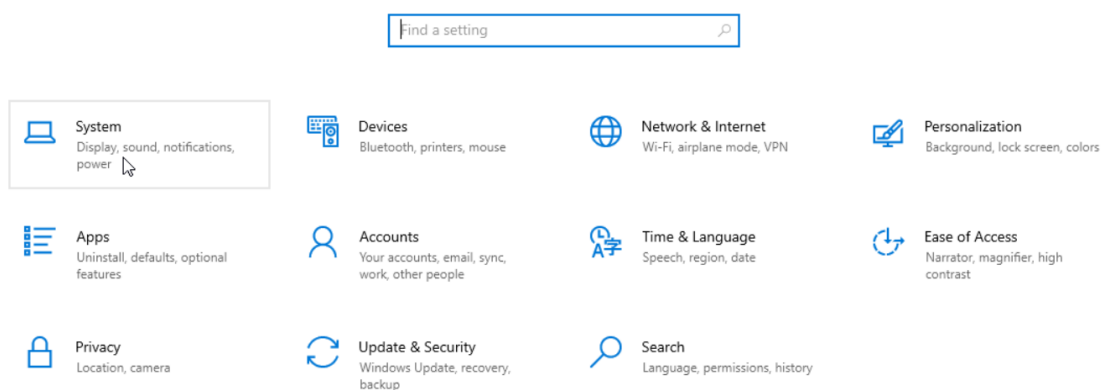
Make sure you have a good backup of your music files, before starting!

If you have no experience with this you can schedule a support session.

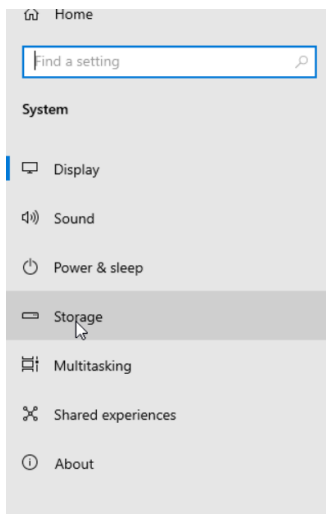
Open settings by right clicking the Start button -> **Settings**



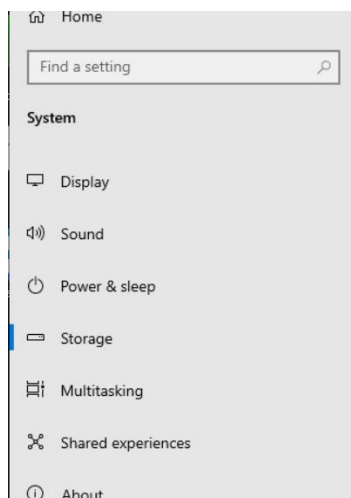
The following screen appears:



Click on **System**.



Click on **Storage**



Storage

Local storage

An administrator has disabled the Storage Service on this system.

Storage sense

[Change how we free up space automatically](#)

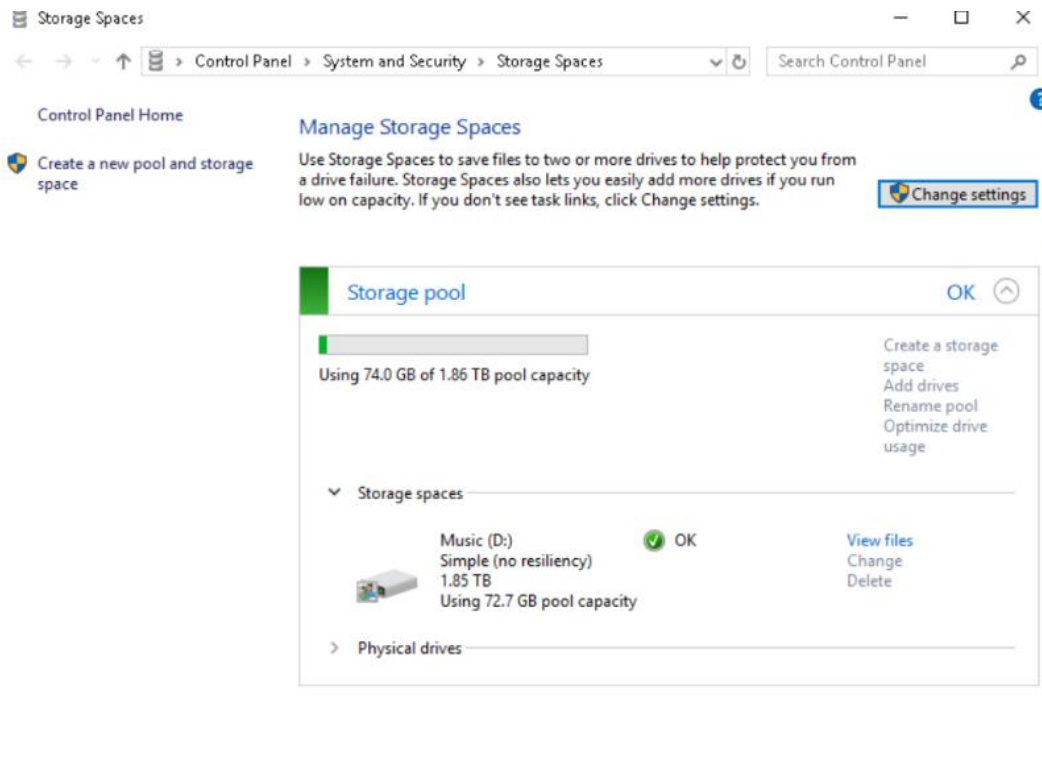
[Free up space now](#)

More storage settings

[Change where new content is saved](#)

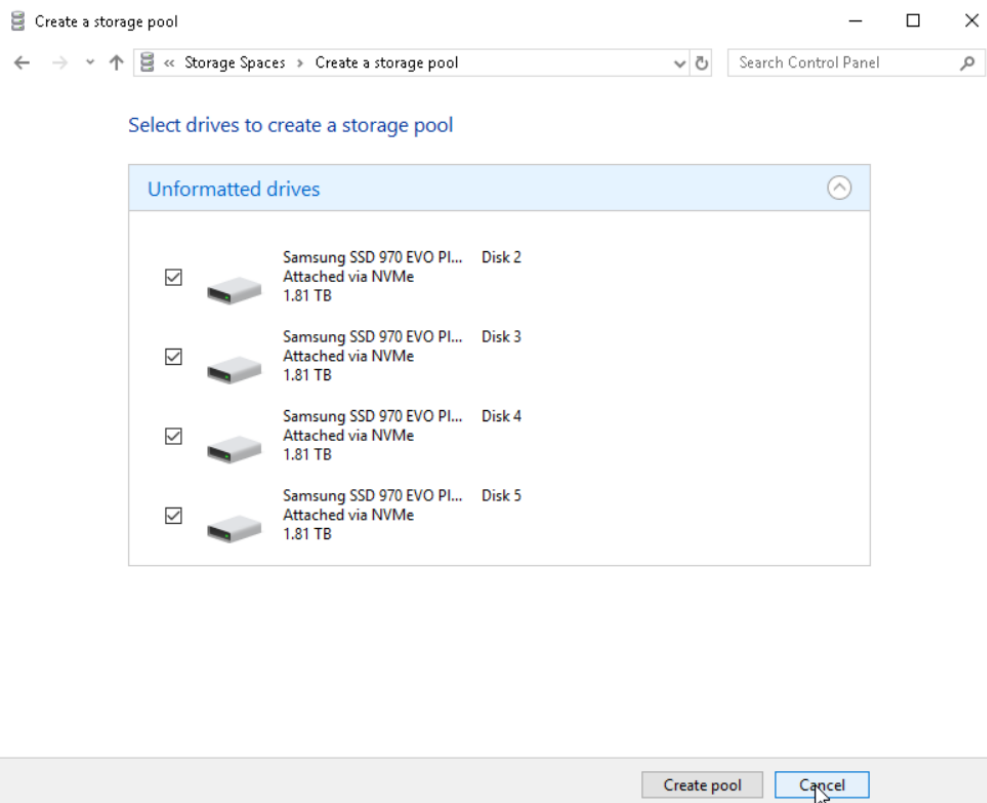
[Manage Storage Spaces](#)

Click on **Manage Storage Spaces**

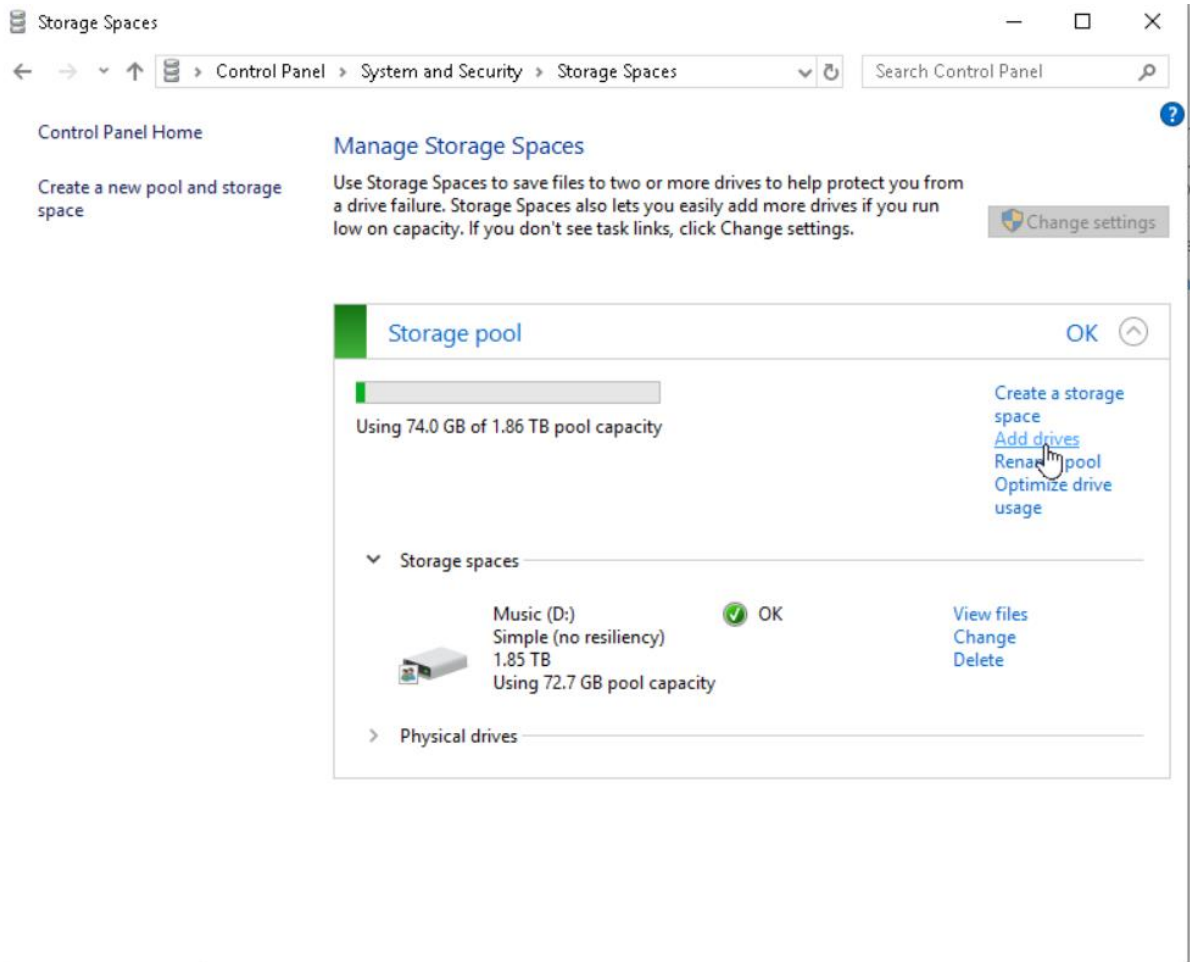


There is a bug here... Add drives is not clickable.

To fix this, click on **Create a new pool and storage space**

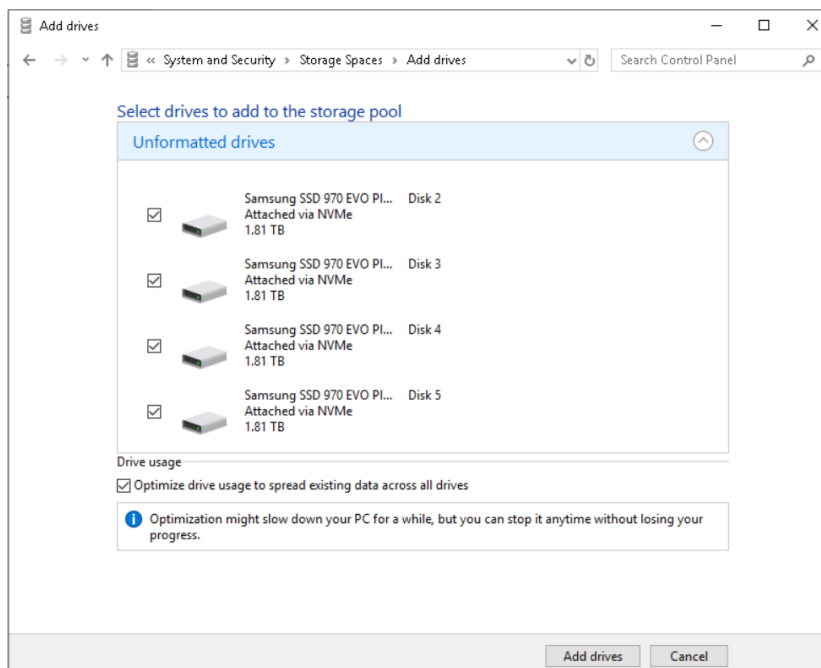


Click on **Cancel**

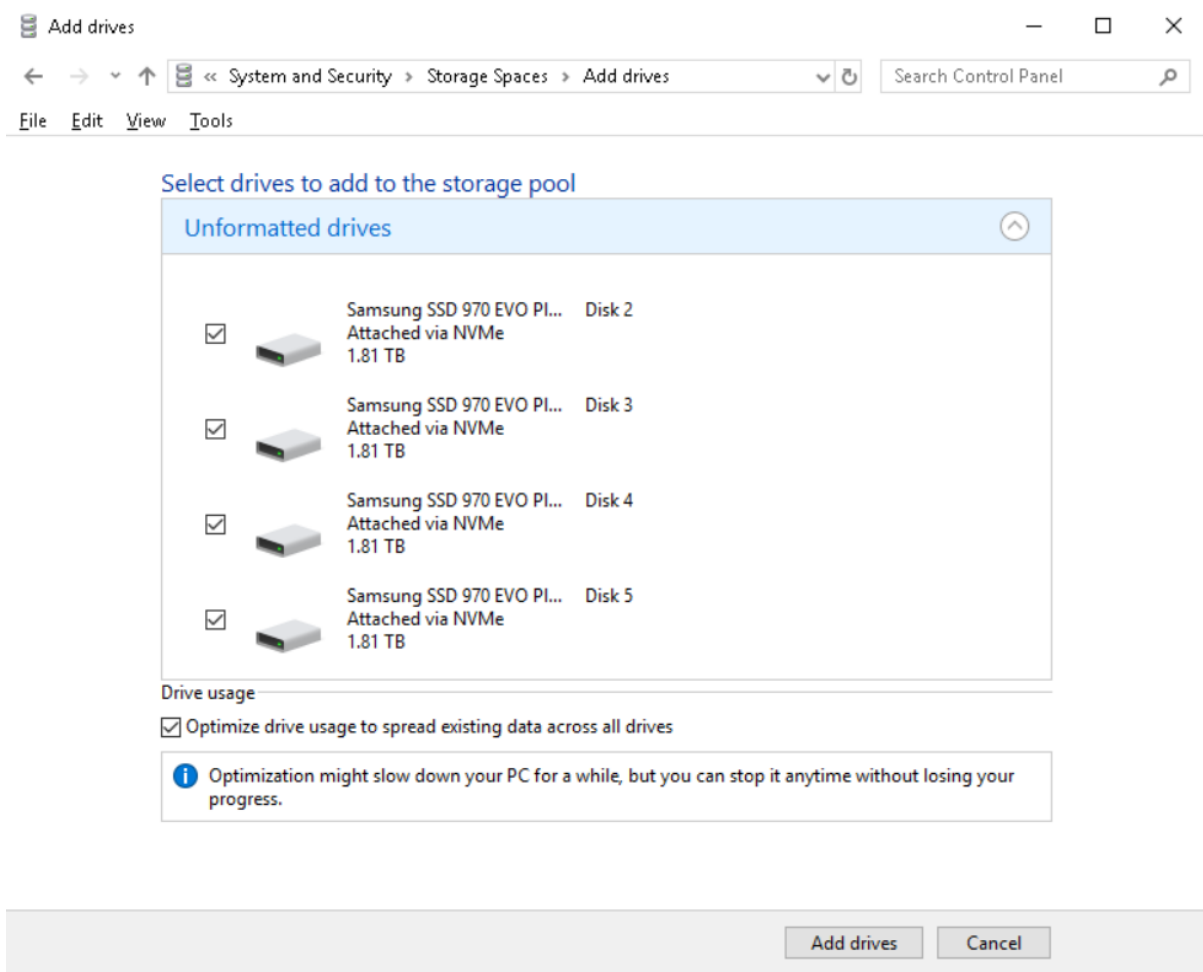


Click on **Add Drives**

The following screen appears:



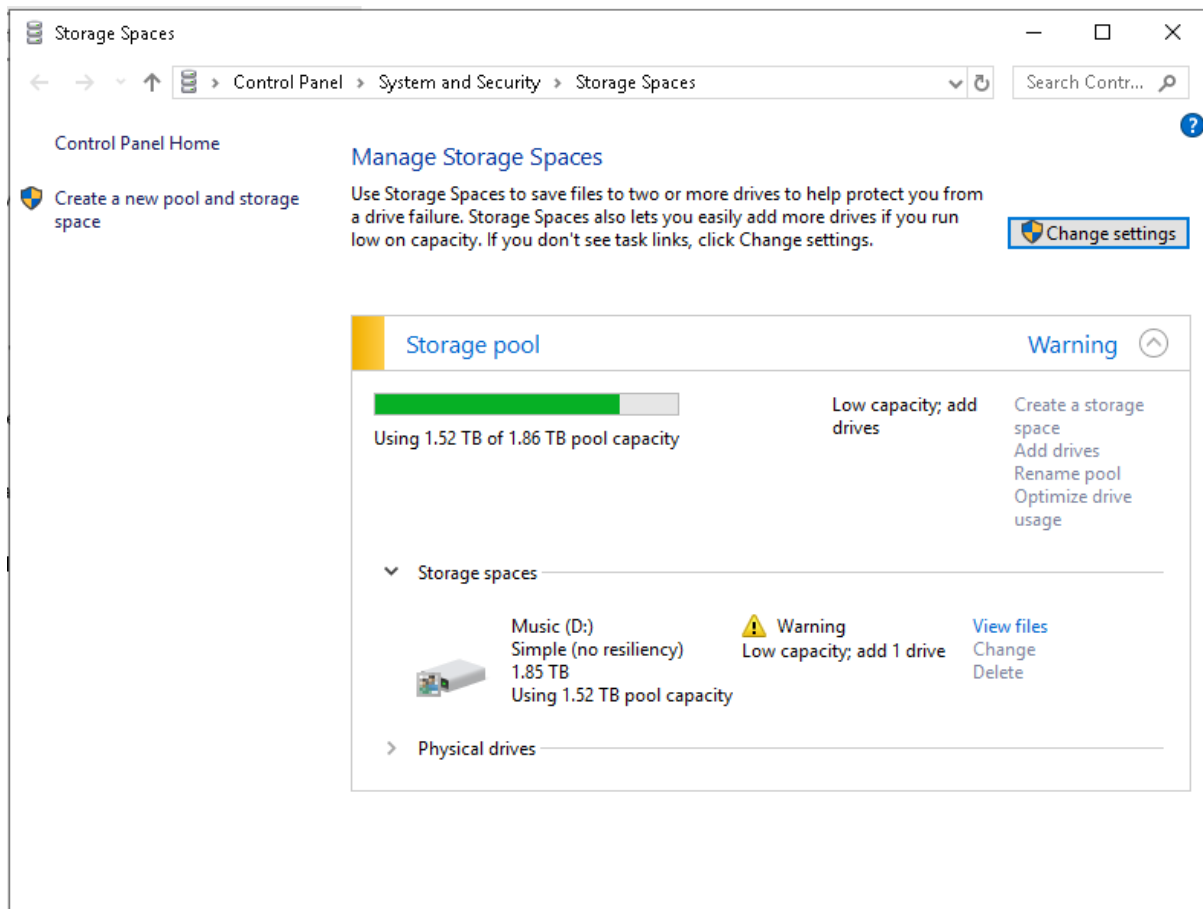
Here you see the Unformatted Drives, click on **Add drives**



Now, you need to enlarge the Storage Pool.

Step back to Storage Spaces by clicking on **Storage Spaces** in the path bar.

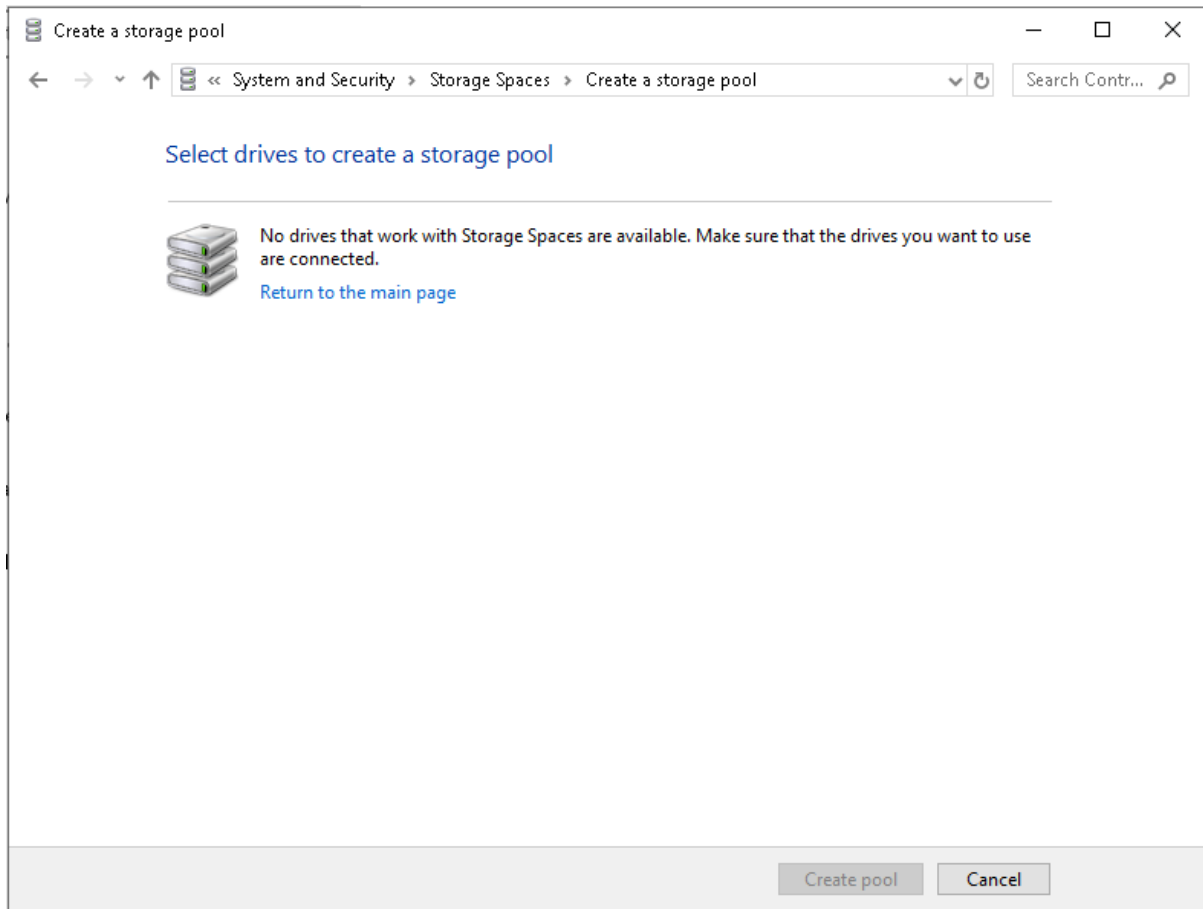
The following screen appears:



Next, we need to enable the **Change** button on the bottom right side so we can click it later. For this, we'll use the following trick.

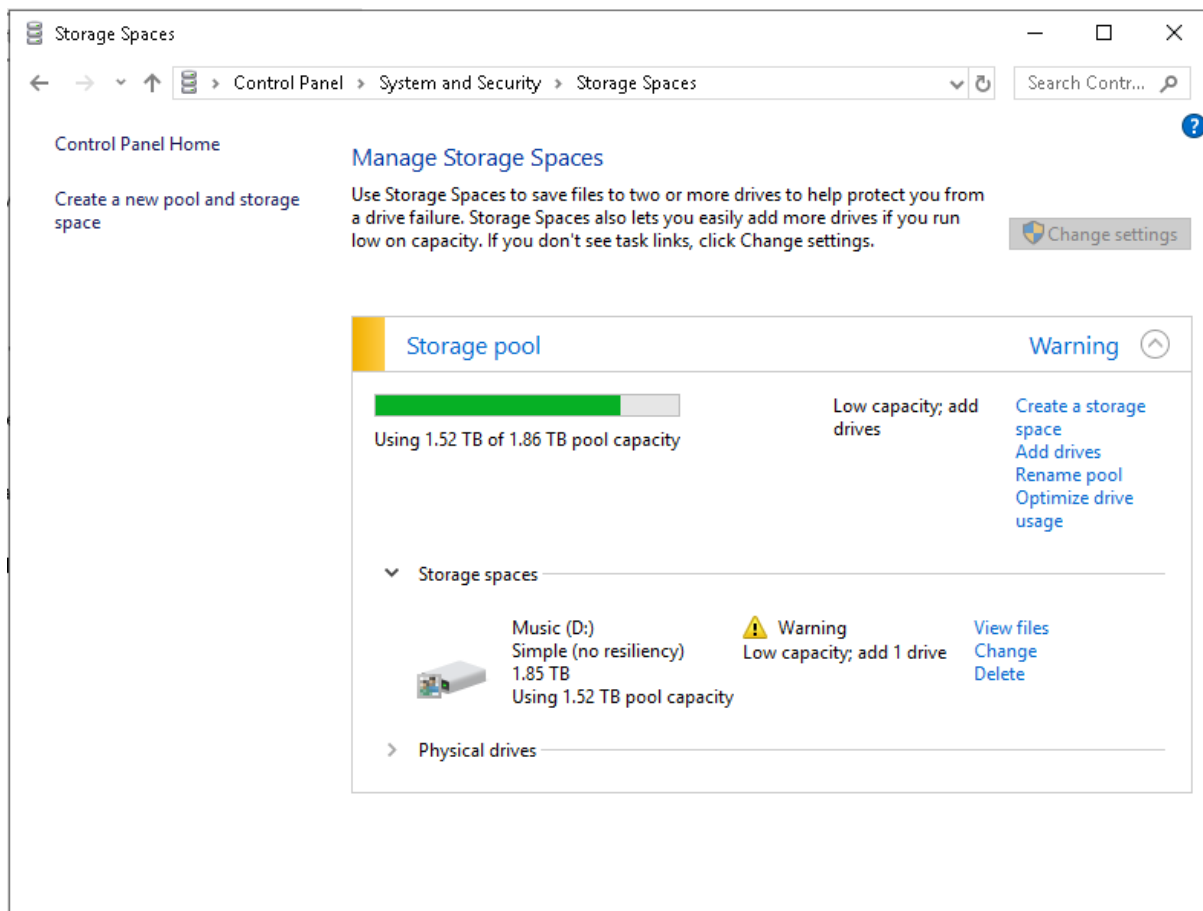
Click on **Create a new pool and storage space** on the top left.

The following screen appears:



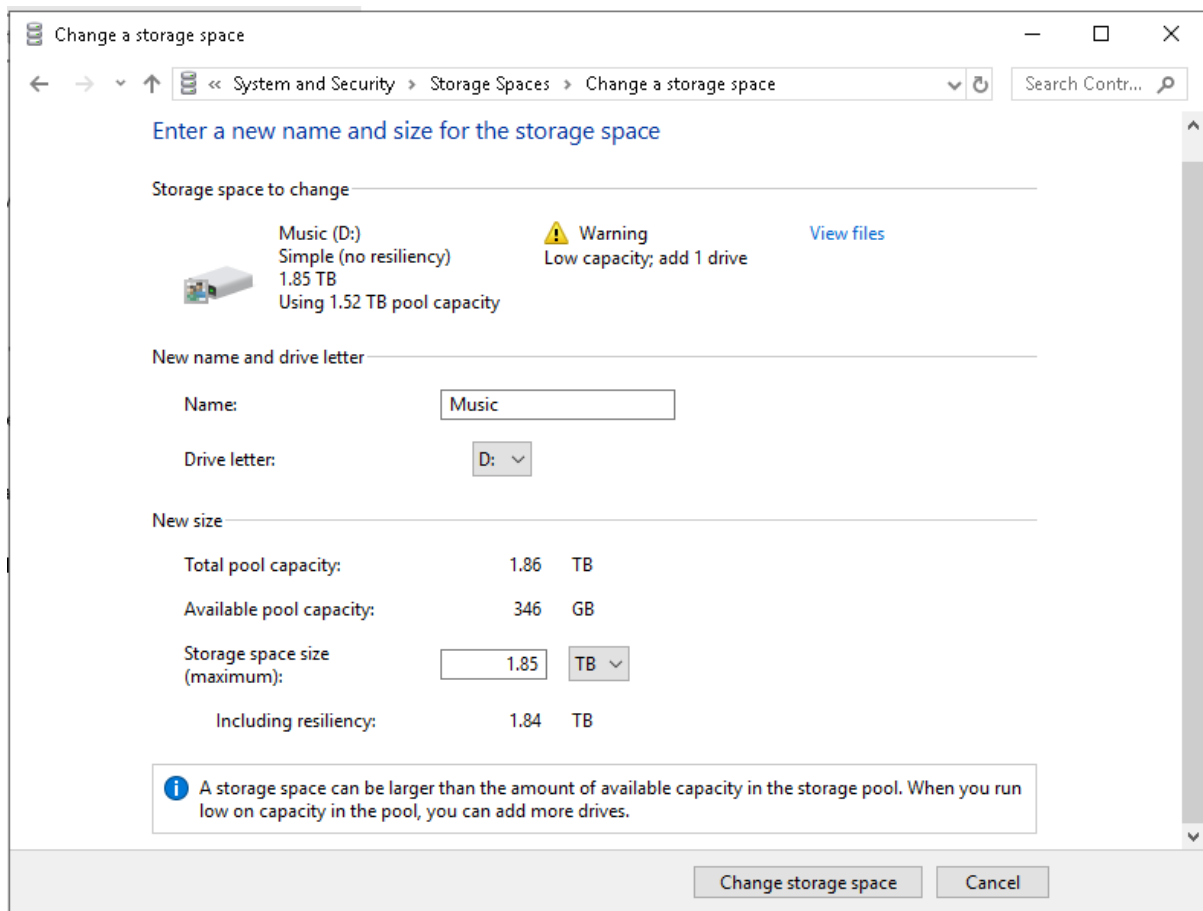
Click **Cancel**.

Now, the **Change** button has become blue.



Click the **Change** button.

The following window appears:



Confirm the combined size.

Click **Change storage space**.

Now, you are all set.