

Supported DACs and USB Profile Guide

This document contains a list of all Taiko USB Driver-supported DACs, and describes how to select the ideal USB Profile for your DAC.

Selecting a USB Profile

Selecting the ideal USB Profile for your DAC is done by logging onto the Extreme Server via VNC, and loading the profile from the desktop. Detailed steps can be found below.

There are 3 steps in this process:

1. Look up your DAC in the DAC list below to find the ideal USB profile.
2. Make a VNC remote desktop connection to your Music Server.
3. Execute the selected profile by right-clicking it and selecting "Run with Powershell".

After this, please follow the guidelines as detailed in the separate Recommended Room Settings document, which can be found in the Downloads section on the Taiko Audio website.

Step 1

Taiko USB driver-supported DACs

Taiko USB driver-supported DACs

Look up your DAC in the list below and make a note of the USB profile and the bit-setting

Note

All DACs in black are embedded part of the initially installed version of the Taiko USB Driver. The DACs in blue are later additions and are present only in the versions of the Taiko Driver as installed for the users that requested this. Contact us via support@taikoaudio.com if you have acquired a new DAC that has been added recently or if you have a DAC that is not on this list.

Analog Domain DAC1 - USB2 - Roon 32-bit

Anthem STR - USB3 - Roon 24-bit

APL DSD-MR - USB4 - Roon 32-bit

APL DSD-SR - USB4 - Roon 32-bit

APL Hi-Fi DSD-GR Galactic Reference DAC - USB4 - Roon 32-bit (same interface as earlier APL models)

Aries Cerat Helene - USB4 - Roon 32-bit

Aries Cerat Cassandra - USB4 - Roon 32-bit

Aqua Formula (V1.0) - USB3 - Roon 24-bit

Aqua Formula xHD (V2.0) - USB4 - Roon 32-bit

Aqua La Scala - USB3 - Roon 24-bit

Ayre QX-5 with USB2 upgrade - USB4 - Roon 32-bit

Benchmark – USB3 – Roon 24-bit (added 16-08-2022)

Berkeley Alpha DAC Reference Series 3 (No recommended settings available) (added 02-08-2023)

Berkeley Alpha USB interface (No recommended settings available) (added 02-08-2023)

B&O Beolab 50 - USB1 or USB3 - Roon 32-bit (added 28-07-2022)

B&O Beolab 90 - USB1 or USB3 - Roon 32-bit (added 07-07-2022)

Boulder 2120

Bricasti MDx - USB4 - Roon 32-bit

Brinkmann Nyquist - USB3 - Roon 24-bit

CH Precision - USB3 - Roon 24-bit

DCS Bartok - USB3 - Roon 24-bit

DCS Lina - USB1 (recommended to also try USB2 and USB4) - Roon 24-bit (added 10-10-2023)

DCS Rossini - USB3 - Roon 24-bit

DCS Rossini Player - USB3 - Roon 24-bit

[dCS Scarlatti - USB3 - Roon 24-bit \(added 12-03-2024\)](#)

DCS Vivaldi - USB3 - Roon 24-bit

DCS Vivaldi Up-sampler - USB3 - Roon 24-bit

DCS Vivaldi One - USB3 - Roon 24-bit

Denafrips Gaia

Denafrips Terminator Plus

Devialet Expert Pro

EMM Labs DA2 - USB3 - Roon 24-bit

EMM Labs DAC2V2 - USB3 - Roon 24-bit

EMM Labs DAC2X - USB3 - Roon 24-bit

Esoteric Grandioso D1X (PCM only) - USB4 - Roon 32-bit

Esoteric Grandioso K1X (PCM only) - USB4 - Roon 32-bit

Esoteric K-01X (PCM only) - USB4 - Roon 32-bit

Esoteric K-01XD (PCM only) - USB4 - Roon 32-bit

Esoteric K-03 (PCM only) - USB4 - Roon 32-bit

Exogal Comet - USB3 - Roon 24-bit

[Grimm LS-1 Active loudspeakers – USB3 – Roon 24-bit \(added 03-2023\)](#)

Goldmund Mimesis 20H Nextgen - USB3 - Roon 24-bit

Gustard X26 Pro - USB4 - Roon 32-bit

Holo Audio May - USBx - Roon 24-bit

Ideon Absolute - USB4 - Roon 32-bit

iFi Pro iDSD

[JLsounds I2SoverUSB - USB4 - Roon 32-bit \(added 07-2022\)](#)

[Kii Control Digital Preamp and USB Interface \(added 25-11-2022\)](#)

Lampizator - USB4 - Roon 32-bit

[Laiv Harmony – USB4 – Roon 32-bit \(added 03-12-2024\)](#)

Linn Klimax DSM - USB2 - 32-bit

LH Davinci MKII - USB4 - Roon 32-bit

LH Virtuoso - USB4 - Roon 32-bit

Luxman D10X - USB1 or USB3 - Roon 24-bit

[Luxman DA-07 - USB4 - Roon 32-bit \(added 20-11-2024\)](#)

Matrix Audio X-SPDIF 2 - USB1 or USB3 - Roon 24 bit

[Marantz SA-10 - USB4 – 32 bit \(added 27-07-2023\)](#)

[Meridian Explorer 2 – USB2 – Roon 32-bit \(added 07-02-2023\)](#)

In this case, it is worth testing the following variants:

USB1 – Roon 32-bit

USB1 – Roon 24-bit

USB3 – Roon 24-bit

Meitner MA-3 - USB3 - Roon 24-bit

Meitner XDS1 V3 - USB3 - Roon 24-bit

[Mola Mola Tambaqui – USB2 or USB4 - Roon 32-bit \(added 08-2022\)](#)

MSB Pro USB - USB3 - Roon 24-bit

[Please note that MSB ProSL may require an Extreme Server reboot to be recognized and connect. If this fails, then please contact Taiko Audio support for a TeamViewer session](#)

MSB V / Quad - USB3 - Roon 24-bit

Mutec MC-3+ - USB3 - Roon 24-bit

Nagra HD-X - USB2 - Roon 32-bit

Nagra Tube Dac - USB2 - Roon 32-bit

Omega Audio Concepts DNA DAC - USB1 - Roon 24-bit

[Playback Design MPD-8 \(JL Sounds USB Board\) - USB4 - Roon 32-bit \(added 19-05-2022\)](#)

[Playback Design MPS-X \(JL Sounds USB Board\) - USB4 - Roon 32-bit \(added 19-05-2022\)](#)

Pilium Elektra - USB3 - Roon 24-bit

Resolution Audio Cantata 3.0

Sennheiser HE-1 - USB2 - Roon 32-bit

Singxer SU-6 - USB3 - Roon 24-bit

SoTM dx-usbHD - USB1 or USB3 - Roon 24-bit

Soulution 330 - USB3 - Roon 24-bit

Soulution 760 - USB3 - Roon 24-bit

[SRC-DX - USB4 - Roon 32-bit \(added 03-2022\)](#)

T+A MP 2500R - USB4 - Roon 32-bit

[T+A R2500R \(new model for 2024\) - USB4 - Roon 32-bit \(added 02-04-2024\)](#)

T+A SD(V)3100 - USB4 - Roon 32-bit

T+A HA 200 - USB4 - Roon 32-bit

Thrax Maximinus - USB4 - Roon 32-bit

Topping NX4DSD - USB4 - Roon 32-bit

Totaldac - USB1 - Roon 24-bit

Totaldac USB Reclocker - USB1 - Roon 24-bit

Trinity 1st gen model - USB1 or USB3 - Roon 24-bit

Trinity Reference

Vinnie Rossi L2 (JL Sounds USB Board) - USB4 - Roon 32-bit

Vitus (JL Sounds USB Board) - USB4 - Roon 32-bit

Wadax Atlantis Reference - USB3 - Roon 24-bit ([updated 20-04-2023](#))

[Wadax Arcadia – USB2 – Roon 32-bit \(added 07-02-2023\)](#)

In this case, it is worth testing the following variants:

USB1 – Roon 32-bit

USB1 – Roon 24-bit

USB3 – Roon 24-bit

Weiss DAC-501 - USB4 - Roon 32-bit

[Weiss Helios – USB4 – Roon 32-bit \(added 31-05-2022\)](#)

[Weiss Medus – USB3 – Roon 24-bit \(added 06-09-2022\)](#)

Ypsilon 1000 - USB4 - Roon 32-bit

Step 2

Connect to Extreme Server via VNC

VNC

Make a VNC remote desktop connection to your Music Server.

Tip If you have accessed the desktop of the server before, and the IP address of the server has not changed, you can start at step 4.

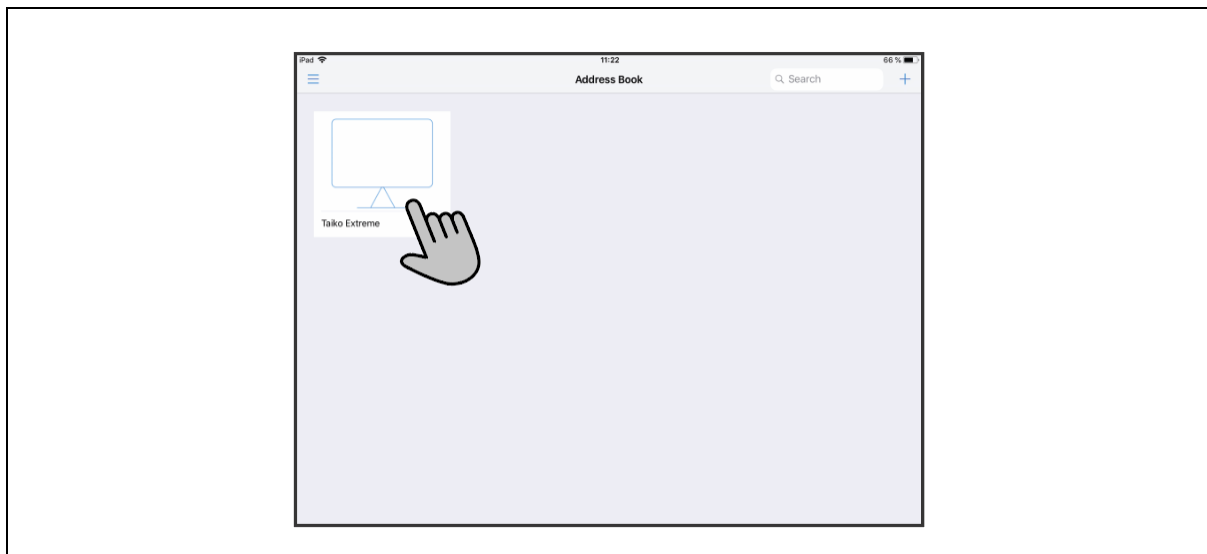
1. Download realVNC on a device connected to the same WiFi network as the server. You can find the app here: <https://www.realvnc.com/en/connect/download/viewer/>
2. Run the VNC app.
3. Click on the + symbol in the top right corner.



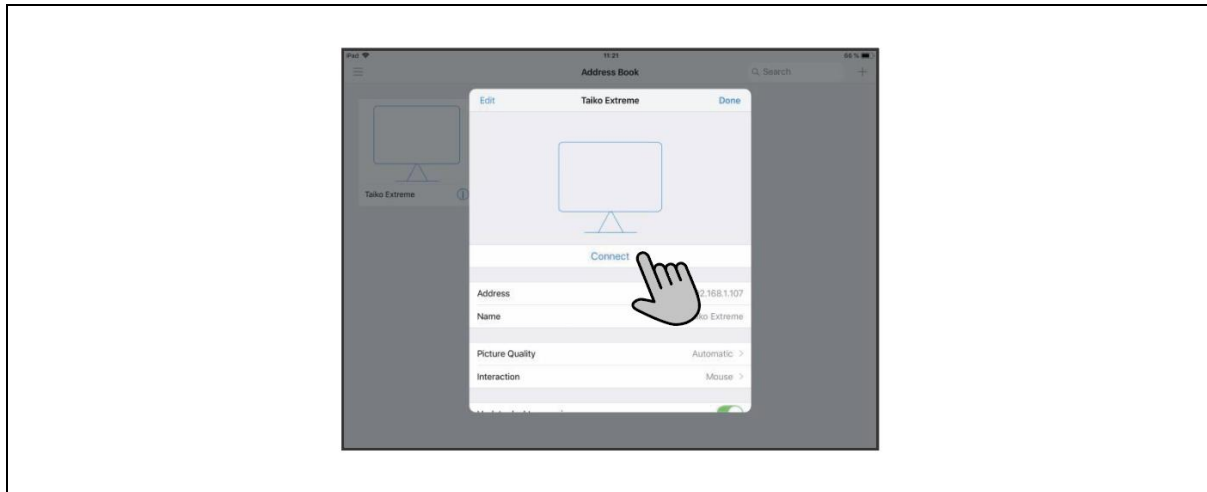
Tip You can find the IP address of the server in the Roon app.

4. Enter the IP address of the server and choose any name.
5. Click *Save*.

You have now created a connection profile.



6. Click the connection profile with the name you entered in step 3.

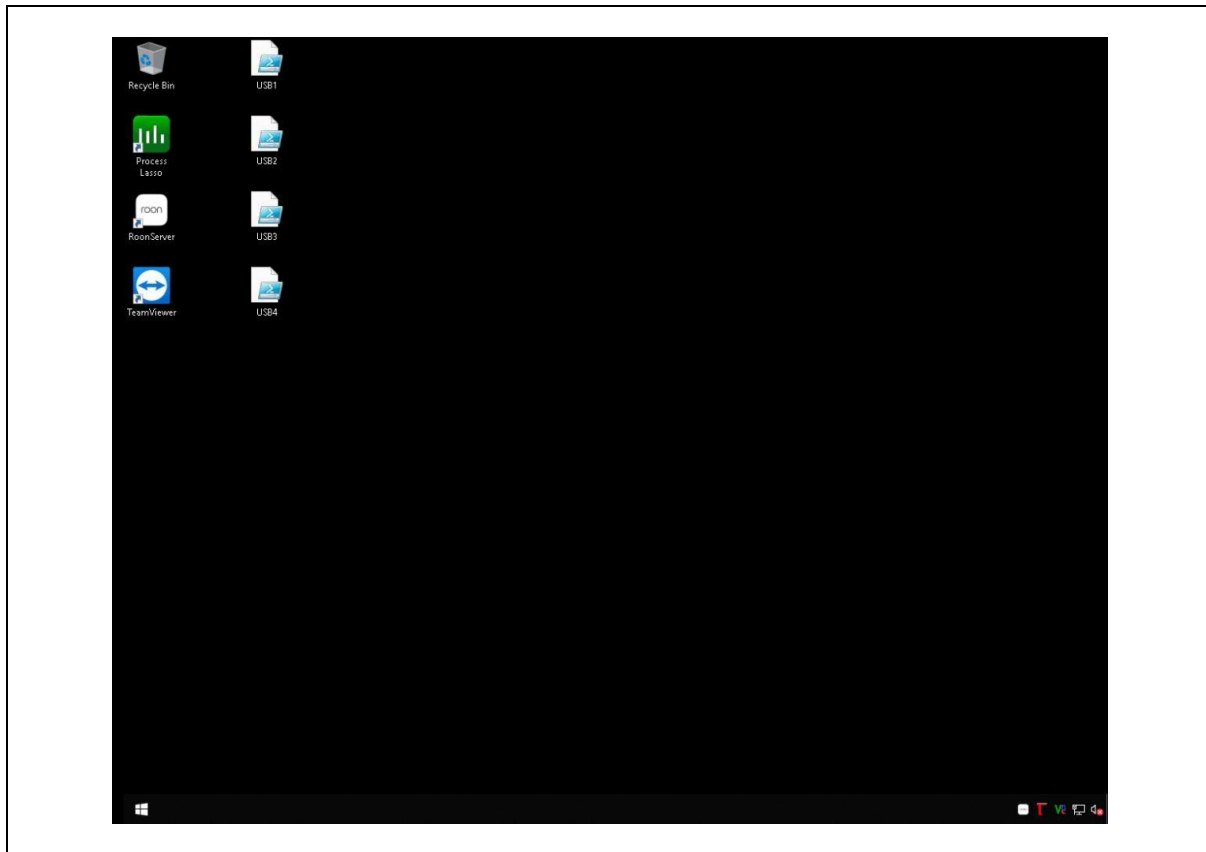


7. Click on *Connect*.



Tip If you don't know the VNC name and password of the server, contact your supplier.

8. Enter the VNC name and password of the server.
9. Select *Remember password*.
10. Click *Continue*



The desktop of the server is shown and can now be controlled.

Tip If you need a keyboard, you can click the keyboard icon in the toolbar at the top of the screen to enable a virtual keyboard.

Alternative method (only MacOS)

When using a MacOS device you can also access the desktop of the server via your browser. Do the following:

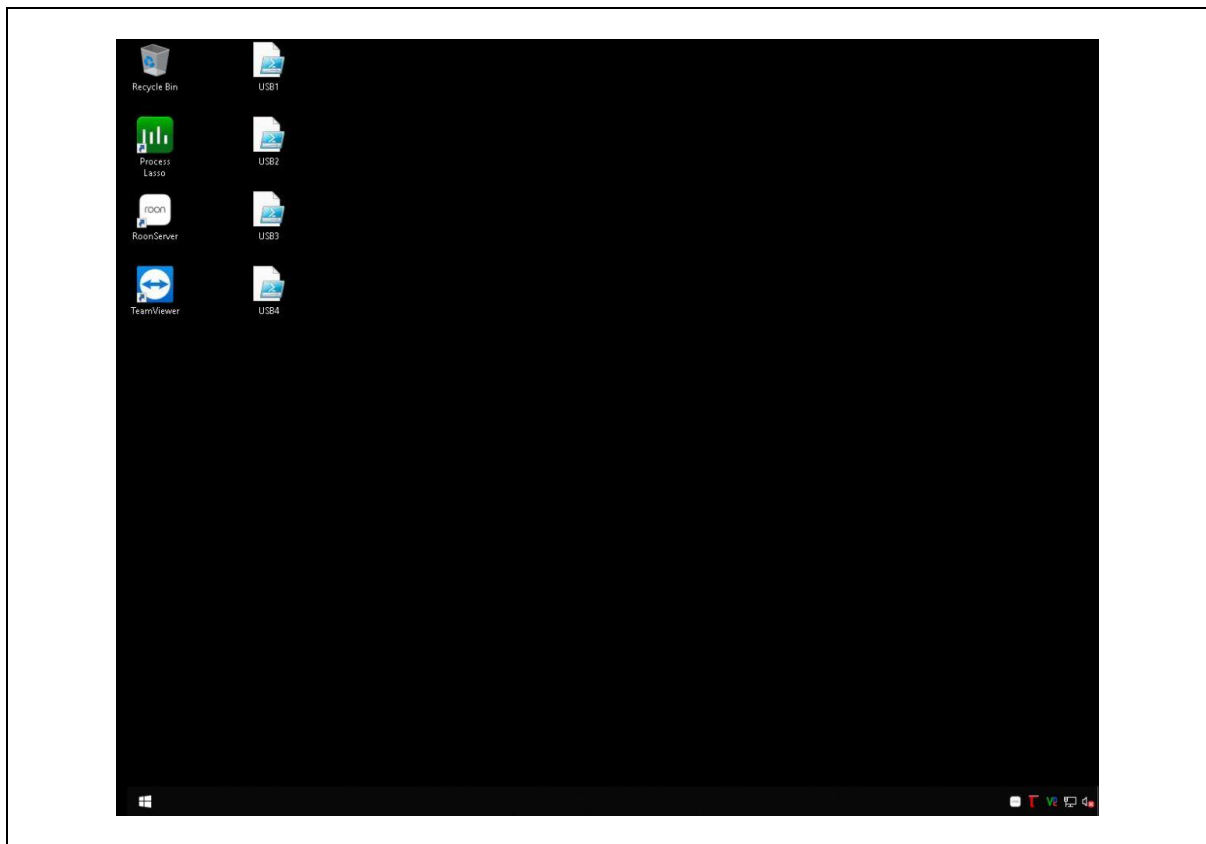
1. Open your browser.
2. Type `vnc://` followed by the IP address of the server in the search bar. For example:
`vnc://192.168.1.23`

A popup appears, asking you if you want to open the screen sharing application.

3. Click *Yes*.

Tip If you don't know the password of the server, contact your supplier.

4. Enter the password of the server.
5. Click *Enter*.



The desktop of the server is shown and can now be controlled.

Tip If you need a keyboard, you can click the keyboard icon in the toolbar at the top of the screen to enable a virtual keyboard.

Step 3

Load USB Profile

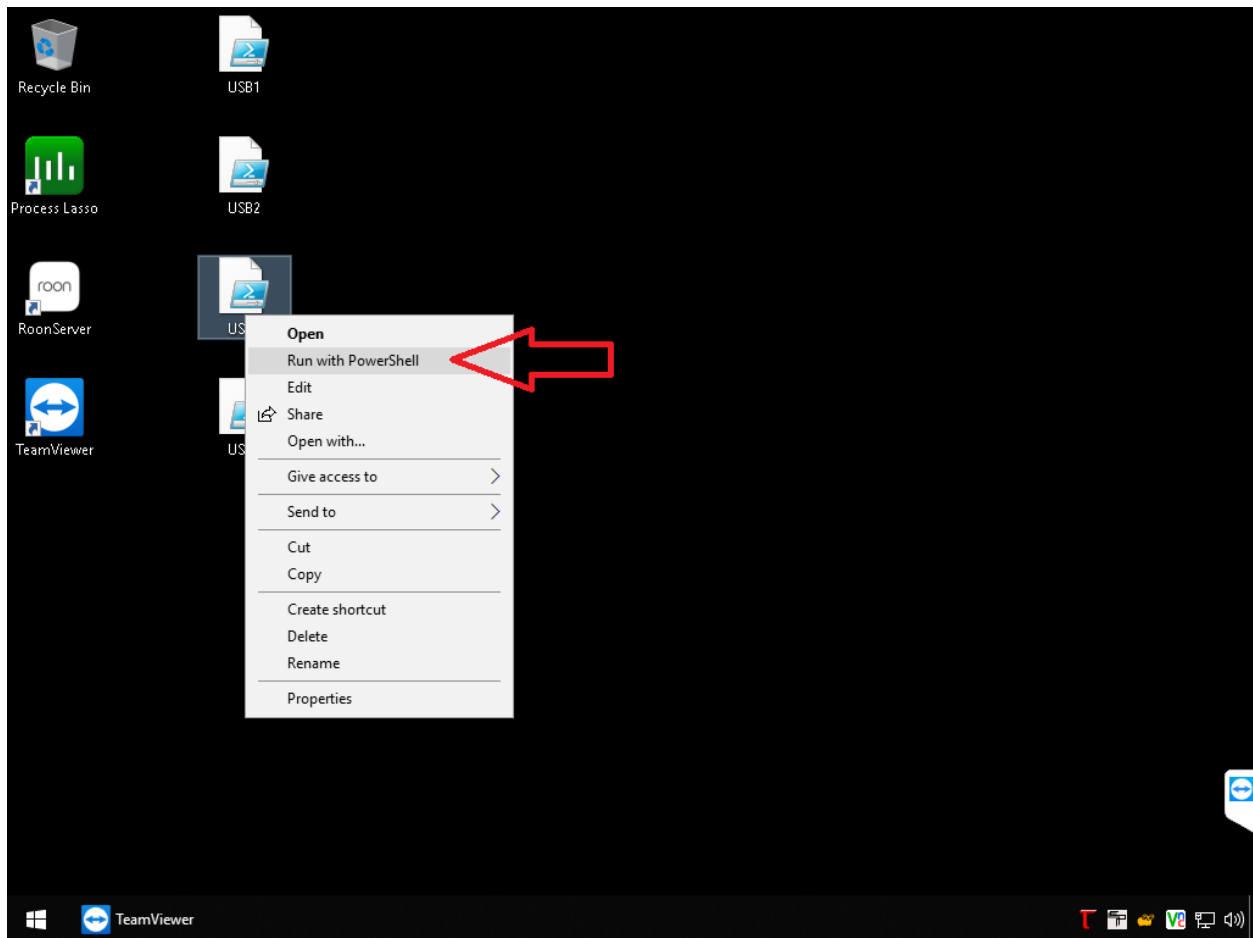
Load USB Profile

You can execute the USB profile on the Extreme's desktop. Please note that this will immediately reboot the Extreme.

The desktop will contain a range of USB Profiles. Select the one that is ideal for your DAC and execute it by right-clicking and selecting "Run with Powershell".

Mac users with single mouse buttons can use the Option key and click, Trackpad users can use a double finger tap to get to the context menu.

This will reboot the Extreme. After that, the profile will be active. It will remain active throughout successive reboots and even after changing from Roon to TAS and back.



You have now completed the USB Profile procedure.

Next, please follow the guidelines as detailed in the separate Recommended Roon Settings document, which can be found in the Downloads section on the Taiko Audio website.